



## Knightsbridge

### THE LANSBURY

International design and development firm, Finchatton ([www.finchatton.com](http://www.finchatton.com)), sold the penthouse apartment in The Lansbury, a new boutique multi-unit development in Knightsbridge, to an international buyer within 24 hours of bringing the apartment to market. The Lansbury now brings to the market the additional apartments available for sale.

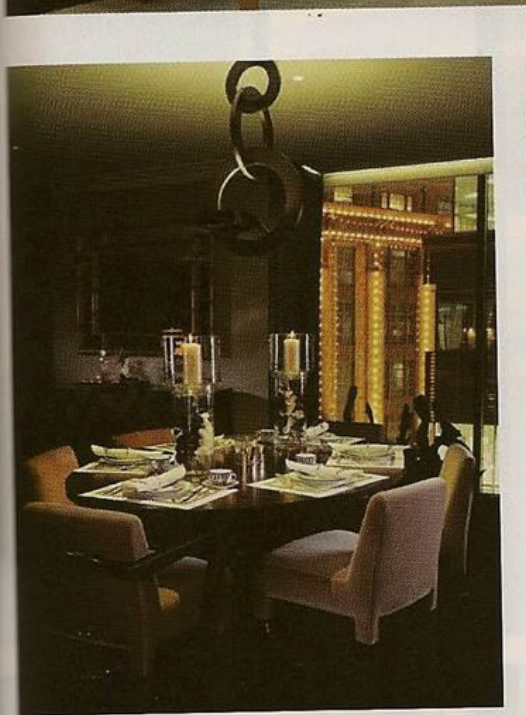
Located within an eight-storey 15,500 sq ft

development on Basil Street, with a partnership with award-winning Small Luxury Hotel of The World, The Capital, who provide hotel-style servicing to The Lansbury's residents, residents have services including concierge, valet, housekeeping, room service, and laundry offered to them.

Co-founder and director, Andrew Dunn, says: "We decided not to show The Lansbury until we were

100% ready and until each apartment was completely finished – exquisitely dressed, perfectly presented – and since launching in January, we've been overwhelmed by the interest from a truly global audience."

The penthouse was priced at £12,500,000. For £13,500,000, previously, in 2011, the one Mount Street, Mayfair apartment also set



records, achieving over £3,700 per sq ft. Later this year, Finchatton will launch another central Mayfair penthouse, this time adjoining the five star Connaught Hotel on Carlos Place.

The remaining apartments at The Lansbury are priced between £3,650,000 - £6,350,000. For sales enquiries please contact Alex Christian of Savills: Tel +44 (0) 20 7590 5065